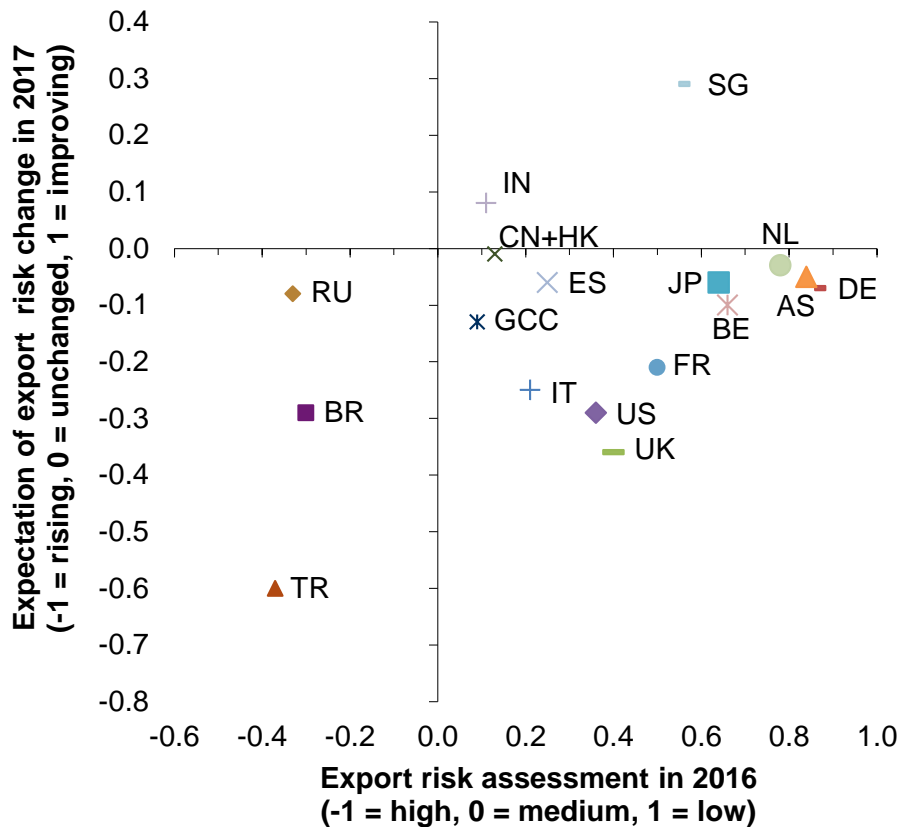


# Swiss Export Monitor: Rising Risk in 2017

## Export risk assessment in 2016 and expectations for 2017



In a survey conducted by **Berner Fachhochschule** and **Euler Hermes** among 334 Swiss companies, the participants **assessed overall export risk in 2016 as moderate** in most countries.

Yet they expect it to **rise in 2017, notably in Turkey, Brazil, the UK, the US and Italy.**